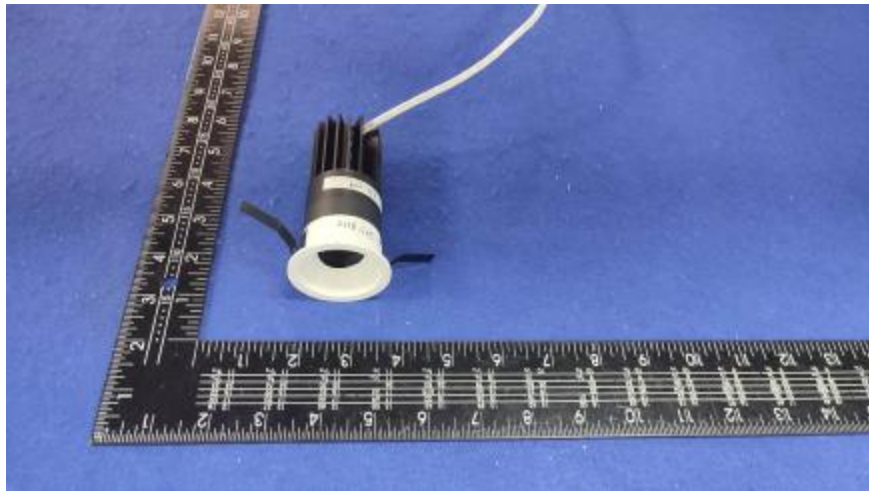


### Luminaire Photograph



Light Output Ratio:	68.2%	
Luminaire Power:	9.36 W	
SHR Nominal:	0.50	Calculated using the TM5
SHR Maximum:	0.60	fine grid method.

C Range: 0 - 360DEG  
C Interval: 30.0DEG  
Test Speed: HIGH  
Temperature: 25.3 °C  
Operators: Zoe  
Test Date: 2022-11-1

$\gamma$  Range: 0 - 180DEG  
 $\gamma$  Interval: 1.0DEG  
Test System: EVERFINE GO-SPEX500\_V1 SYSTEM V2.00.416  
Humidity: 65.0%  
Test Distance: 3.160m [K=1.0000]  
Remarks: LAMP: CMA1306-0000-000F0U0A30G Ra:90  
LENS: PM-1084B 36R  
NO DRIVER: 500mA  
30minutes warm-up

## LUMINOUS INTENSITY DISTRIBUTION DIAGRAM

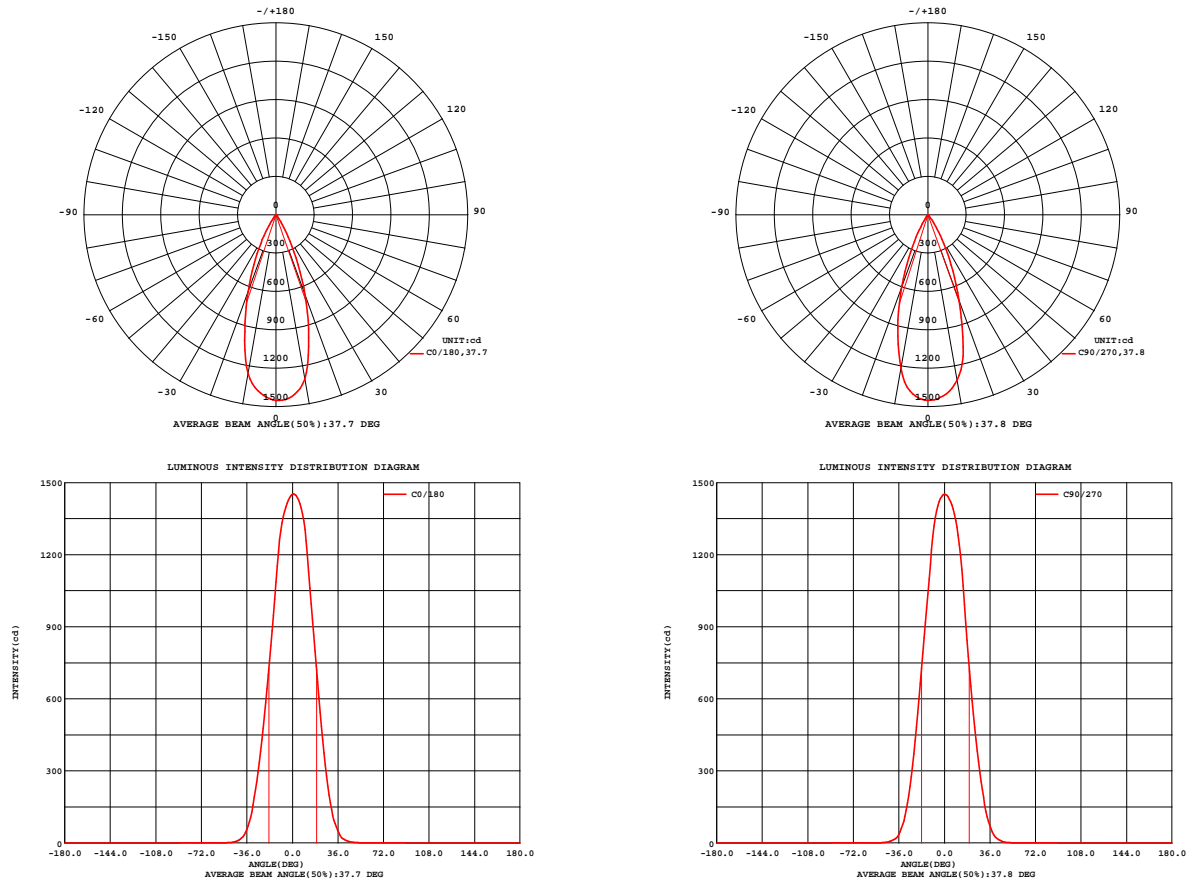


Fig. C0/C180

Fig. C90/C270

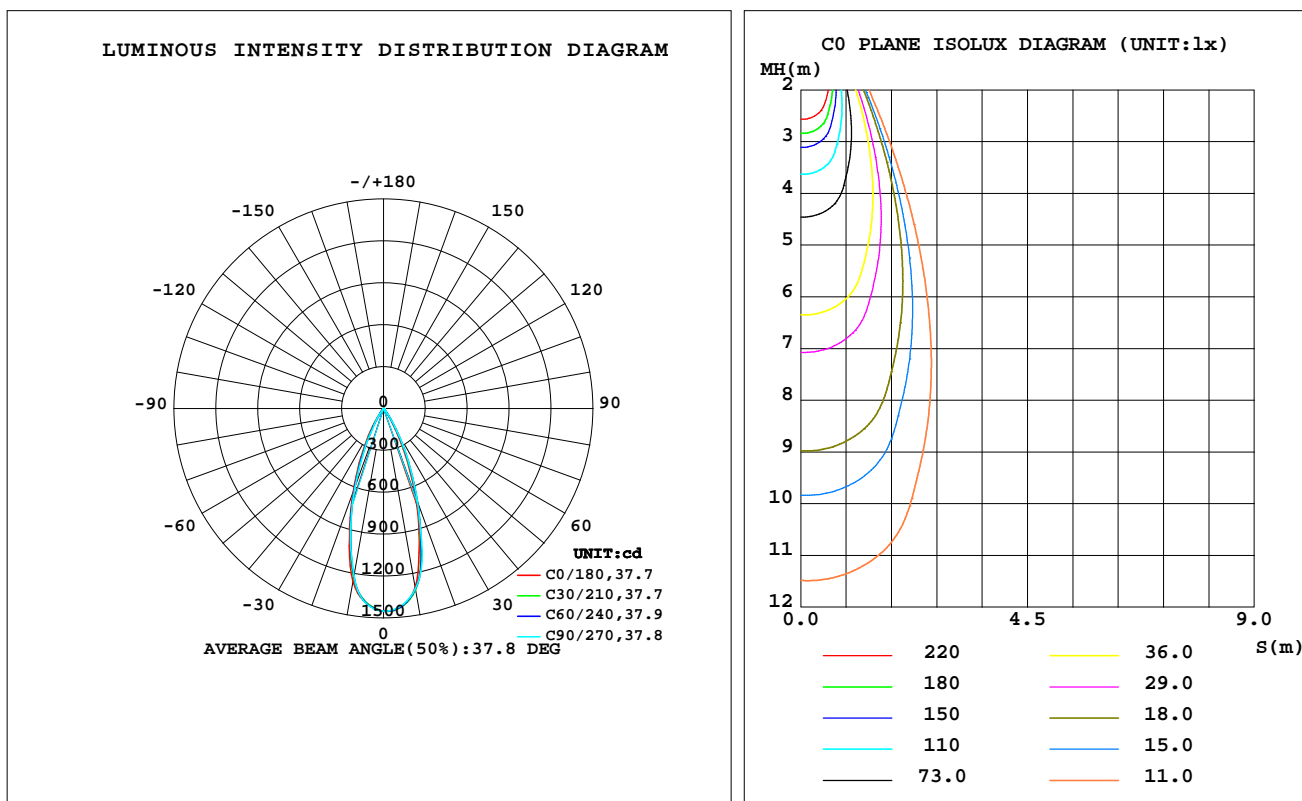
C Range: 0 - 360DEG  
C Interval: 30.0DEG  
Test Speed: HIGH  
Temperature: 25.3 °C  
Operators: Zoe  
Test Date: 2022-11-1

γ Range: 0 - 180DEG  
γ Interval: 1.0DEG  
Test System: EVERFINE GO-SPEX500\_V1 SYSTEM V2.00.416  
Humidity: 65.0%  
Test Distance: 3.160m [K=1.0000]  
Remarks: LAMP: CMA1306-0000-000F0U0A30G Ra: 90  
LENS: PM-1084B 36R  
NO DRIVER: 500mA  
30minutes warm-up

## LUMINAIRE PHOTOMETRIC TEST REPORT

Test:U:18.727V I:0.4998A P:9.3597W PF:1.0000 Freq:59.98Hz Lamp Flux:919.82x1 lm		
NAME: 2118.565-LEA-09B	TYPE:	WEIGHT:
SPEC.: 3000K	DIM.:	SERIAL No.: 2211011098
MFR.: RISE	SUR.: 0.001256m2	Shielding Angle:

DATA OF LAMP		PHOTOMETRIC DATA Eff: 67.05 lm/W			
MODEL	CREE	I <sub>max</sub> (cd)	1453	S/MH(C0/180)	0.61
NOMINAL POWER(W)	9	LOR(%)	68.2	S/MH(C90/270)	0.58
RATED VOLTAGE(V)	18	TOTAL FLUX(lm)	627.61	η UP,DN(C0-180)	0.0,35.9
NOMINAL FLUX(lm)	919.82	CIE CLASS	DIRECT	η UP,DN(C180-360)	0.0,32.3
LAMPS INSIDE	1	η up(%)	0.0	CIBSE SHR NOM	0.50
TEST VOLTAGE(V)	18	η down(%)	68.2	CIBSE SHR MAX	0.60



C Range: 0 - 360DEG  
C Interval: 30.0DEG  
Test Speed: HIGH  
Temperature:25.3℃  
Operators:Zoe  
Test Date:2022-11-1

γ Range: 0 - 180DEG  
γ Interval: 1.0DEG  
Test System:EVERFINE GO-SPEX500\_V1 SYSTEM V2.00.416  
Humidity:65.0%  
Test Distance:3.160m [K=1.0000]  
Remarks: LAMP:CMA1306-0000-000F0U0A30G Ra:90  
LENS:PM-1084B 36R  
NO DRIVER:500mA  
30minutes warm-up

## ZONAL FLUX DIAGRAM

### ZONAL FLUX DIAGRAM:

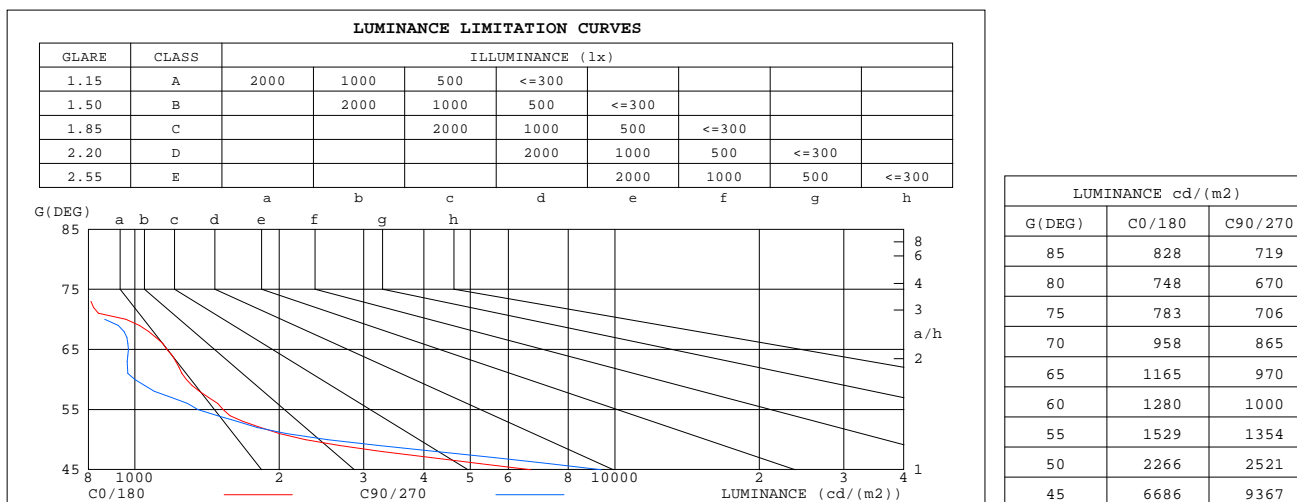
$\gamma$	C0	C45	C90	C135	C180	C225	C270	C315	$\gamma$	$\Phi$ zone	$\Phi$ total	%lum,lamp
10	1305	1317	1313	1283	1261	1231	1220	1276	0- 10	130.7	130.7	20.8,14.2
20	671.6	708.6	712.9	665.1	642.4	612.2	600.0	648.0	10- 20	267.4	398.1	63.4,43.3
30	167.4	202.7	223.3	205.5	189.3	154.4	136.3	155.9	20- 30	174.7	572.9	91.3,62.3
40	18.21	23.81	26.72	25.25	21.64	15.53	13.41	15.84	30- 40	47.29	620.1	98.8,67.4
50	1.830	1.943	2.035	1.764	1.502	1.241	1.159	1.386	40- 50	5.702	625.8	99.7,68
60	0.8040	0.6912	0.6275	0.6029	0.6919	0.6528	0.6693	0.6980	50- 60	0.8803	626.7	99.9,68.1
70	0.4116	0.3918	0.3716	0.3198	0.3215	0.3435	0.4699	0.4633	60- 70	0.5486	627.3	99.9,68.2
80	0.1632	0.1512	0.1460	0.1317	0.1381	0.1336	0.1451	0.1552	70- 80	0.2503	627.5	100,68.2
90	0	0	0	0	0	0	0	0	80- 90	0.0817	627.6	100,68.2
100	0	0	0	0	0	0	0	0	90-100	0	627.6	100,68.2
110	0	0	0	0	0	0	0	0	100-110	0	627.6	100,68.2
120	0	0	0	0	0	0	0	0	110-120	0	627.6	100,68.2
130	0	0	0	0	0	0	0	0	120-130	0	627.6	100,68.2
140	0	0	0	0	0	0	0	0	130-140	0	627.6	100,68.2
150	0	0	0	0	0	0	0	0	140-150	0	627.6	100,68.2
160	0	0	0	0	0	0	0	0	150-160	0	627.6	100,68.2
170	0	0	0	0	0	0	0	0	160-170	0	627.6	100,68.2
180	0	0	0	0	0	0	0	0	170-180	0	627.6	100,68.2
DEG	LUMINOUS INTENSITY:cd									UNIT:lm		

C Range: 0 - 360DEG  
C Interval: 30.0DEG  
Test Speed: HIGH  
Temperature:25.3℃  
Operators:Zoe  
Test Date:2022-11-1

$\gamma$  Range: 0 - 180DEG  
 $\gamma$  Interval: 1.0DEG  
Test System:EVERFINE GO-SPEX500\_V1 SYSTEM V2.00.416  
Humidity:65.0%  
Test Distance:3.160m [K=1.0000]  
Remarks: LAMP:CMA1306-0000-000F0U0A30G Ra:90  
LENS:PM-1084B 36R  
NO DRIVER:500mA  
30minutes warm-up

## LUMINANCE LIMITATION CURVES

Test:U:18.727V I:0.4998A P:9.3597W PF:1.0000 Freq:59.98Hz Lamp Flux:919.82x1 lm		
NAME: 2118.565-LEA-09B	TYPE:	WEIGHT:
SPEC.: 3000K	DIM.:	SERIAL No.: 2211011098
MFR.: RISE	SUR.: 0.001256m2	Shielding Angle:



C Range: 0 - 360DEG  
C Interval: 30.0DEG  
Test Speed: HIGH  
Temperature:25.3℃  
Operators:Zoe  
Test Date:2022-11-1

γ Range: 0 - 180DEG  
γ Interval: 1.0DEG  
Test System:EVERFINE GO-SPEX500\_V1 SYSTEM V2.00.416  
Humidity:65.0%  
Test Distance:3.160m [K=1.0000]  
Remarks: LAMP:CMA1306-0000-000F0U0A30G Ra:90  
LENS:PM-1084B 36R  
NO DRIVER:500mA  
30minutes warm-up

## CU AND LUMINAIRE BUDGETARY ESTIMATE DIAGRAM

Test:U:18.727V I:0.4998A P:9.3597W PF:1.0000 Freq:59.98Hz  
Lamp Flux:919.82x1 lm

NAME: 2118.565-LEA-09B

TYPE:

WEIGHT:

SPEC.: 3000K

DIM.:

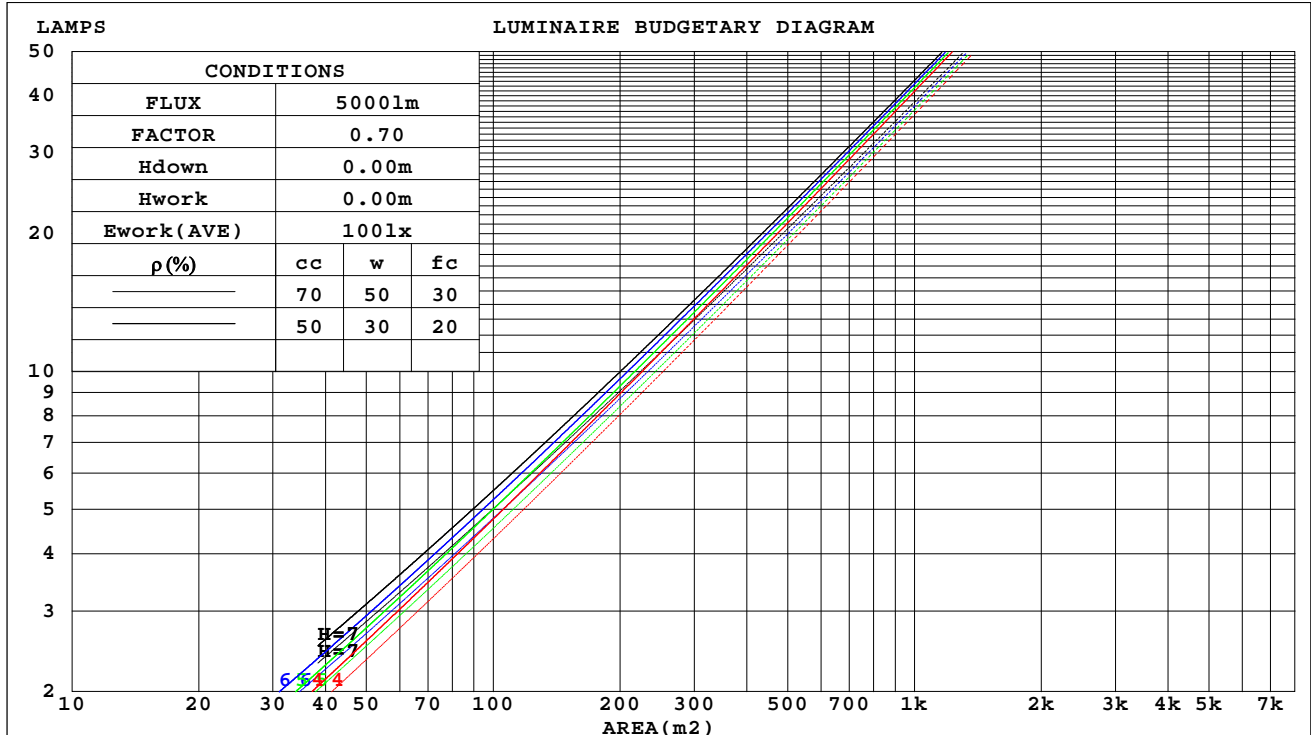
SERIAL No.: 2211011098

MFR.: RISE

SUR.: 0.001256m2

Shielding Angle:

$\rho_{cc}$	80%			70%			50%			30%			10%			0
$\rho_w$	50%	30%	10%	50%	30%	10%	50%	30%	10%	50%	30%	10%	50%	30%	10%	0
$\rho_{fc}$	20%			20%			20%			20%			20%			0
RCR	RCR:Room Cavity Ratio Coefficients of Utilization(CU)															
0.0	.81	.81	.81	.79	.79	.79	.76	.76	.76	.73	.73	.73	.70	.70	.70	.68
1.0	.77	.75	.74	.75	.74	.73	.72	.71	.70	.70	.69	.68	.67	.67	.66	.65
2.0	.72	.70	.68	.71	.69	.67	.69	.67	.66	.67	.66	.65	.65	.64	.63	.62
3.0	.69	.66	.64	.68	.65	.63	.66	.64	.62	.64	.63	.61	.63	.61	.60	.59
4.0	.65	.62	.60	.65	.62	.60	.63	.61	.59	.62	.60	.58	.61	.59	.58	.57
5.0	.62	.59	.57	.62	.59	.56	.61	.58	.56	.59	.57	.55	.58	.57	.55	.54
6.0	.59	.56	.54	.59	.56	.54	.58	.55	.53	.57	.55	.53	.56	.54	.53	.52
7.0	.57	.54	.51	.57	.53	.51	.56	.53	.51	.55	.53	.51	.54	.52	.50	.50
8.0	.55	.51	.49	.54	.51	.49	.54	.51	.49	.53	.50	.49	.52	.50	.48	.48
9.0	.52	.49	.47	.52	.49	.47	.52	.49	.47	.51	.48	.47	.51	.48	.46	.46
10.0	.50	.47	.45	.50	.47	.45	.50	.47	.45	.49	.47	.45	.49	.46	.45	.44



C Range: 0 - 360DEG  
C Interval: 30.0DEG  
Test Speed: HIGH  
Temperature:25.3℃  
Operators:Zoe  
Test Date:2022-11-1

$\gamma$  Range: 0 - 180DEG  
 $\gamma$  Interval: 1.0DEG  
Test System:EVERFINE GO-SPEX500\_V1 SYSTEM V2.00.416  
Humidity:65.0%  
Test Distance:3.160m [K=1.0000]  
Remarks: LAMP:CMA1306-0000-000F0U0A30G Ra:90  
LENS:PM-1084B 36R  
NO DRIVER:500mA  
30minutes warm-up

### WEC AND CCEC

Test:U:18.727V I:0.4998A P:9.3597W PF:1.0000 Freq:59.98Hz Lamp Flux:919.82x1 lm		
NAME: 2118.565-LEA-09B	TYPE:	WEIGHT:
SPEC.: 3000K	DIM.:	SERIAL No.: 2211011098
MFR.: RISE	SUR.: 0.001256m2	Shielding Angle:

pcc	80%			70%			50%			30%			10%			0
pw	50%	30%	10%	50%	30%	10%	50%	30%	10%	50%	30%	10%	50%	30%	10%	0
pfc	20%			20%			20%			20%			20%			0
RCR	RCR:Room Cavity Ratio						Wall Exitance Coefficients(WEC)									
0.0																
1.0	.103	.059	.019	.099	.056	.018	.090	.052	.017	.083	.048	.015	.075	.044	.014	
2.0	.097	.053	.016	.093	.051	.016	.086	.048	.015	.080	.045	.014	.074	.042	.013	
3.0	.091	.049	.015	.088	.047	.014	.082	.045	.014	.077	.042	.013	.072	.040	.012	
4.0	.087	.045	.013	.084	.044	.013	.079	.042	.012	.074	.040	.012	.070	.038	.012	
5.0	.082	.042	.012	.080	.041	.012	.076	.039	.012	.071	.038	.011	.068	.036	.011	
6.0	.078	.039	.011	.076	.039	.011	.072	.037	.011	.069	.036	.011	.066	.035	.010	
7.0	.075	.037	.010	.073	.036	.010	.070	.035	.010	.067	.034	.010	.064	.033	.010	
8.0	.072	.035	.010	.070	.034	.010	.067	.034	.010	.064	.033	.009	.062	.032	.009	
9.0	.069	.033	.009	.067	.033	.009	.065	.032	.009	.062	.031	.009	.060	.030	.009	
10.0	.066	.032	.009	.065	.031	.009	.062	.031	.009	.060	.030	.009	.058	.029	.008	

pcc	80%			70%			50%			30%			10%			0	
pw	50%	30%	10%	50%	30%	10%	50%	30%	10%	50%	30%	10%	50%	30%	10%	0	
pfc	20%			20%			20%			20%			20%			0	
RCR	RCR:Room Cavity Ratio						Ceiling Cavity Exitance Coefficients(CCEC)										
0.0	.130	.130	.130	.111	.111	.111	.076	.076	.076	.044	.044	.044	.014	.014	.014		
1.0	.116	.107	.100	.099	.092	.086	.068	.063	.060	.039	.037	.035	.012	.012	.011		
2.0	.104	.090	.079	.089	.078	.068	.061	.054	.048	.035	.031	.028	.011	.010	.009		
3.0	.094	.077	.064	.081	.067	.055	.056	.046	.039	.032	.027	.023	.010	.009	.007		
4.0	.086	.067	.052	.074	.058	.045	.051	.040	.032	.030	.024	.019	.009	.008	.006		
5.0	.080	.059	.043	.069	.051	.038	.047	.036	.027	.027	.021	.016	.009	.007	.005		
6.0	.074	.052	.036	.064	.045	.032	.044	.032	.022	.026	.019	.013	.008	.006	.004		
7.0	.069	.047	.031	.060	.041	.027	.041	.028	.019	.024	.017	.011	.008	.005	.004		
8.0	.065	.042	.027	.056	.037	.023	.039	.026	.016	.023	.015	.010	.007	.005	.003		
9.0	.062	.039	.023	.053	.034	.020	.037	.024	.014	.021	.014	.009	.007	.005	.003		
10.0	.058	.036	.020	.050	.031	.018	.035	.022	.013	.020	.013	.007	.007	.004	.002		

C Range: 0 - 360DEG  
C Interval: 30.0DEG  
Test Speed: HIGH  
Temperature:25.3℃  
Operators:Zoe  
Test Date:2022-11-1

γ Range: 0 - 180DEG  
γ Interval: 1.0DEG  
Test System:EVERFINE GO-SPEX500\_V1 SYSTEM V2.00.416  
Humidity:65.0%  
Test Distance:3.160m [K=1.0000]  
Remarks: LAMP:CMA1306-0000-000F0U0A30G Ra:90  
LENS:PM-1084B 36R  
NO DRIVER:500mA  
30minutes warm-up

## UGR(Unified Glare Rating) Table

Test:U:18.727V I:0.4998A P:9.3597W PF:1.0000 Freq:59.98Hz Lamp Flux:919.82x1 lm										
NAME: 2118.565-LEA-09B					TYPE:			WEIGHT:		
SPEC.: 3000K					DIM.:			SERIAL No.: 2211011098		
MFR.: RISE					SUR.: 0.001256m2			Shielding Angle:		
ceiling/cavity	0.7	0.7	0.5	0.5	0.3	0.7	0.7	0.5	0.5	0.3
walls	0.5	0.3	0.5	0.3	0.3	0.5	0.3	0.5	0.3	0.3
working plane	0.2	0.2	0.2	0.2	0.2	0.2	0.2	0.2	0.2	0.2
Room dimensions	Viewed crosswise					Viewed endwise				
x = 2H y = 2H	14.9	15.6	15.1	15.8	15.9	16.2	17.0	16.4	17.2	17.3
3H	14.7	15.4	15.0	15.6	15.8	16.1	16.8	16.3	17.0	17.2
4H	14.6	15.3	14.9	15.5	15.7	16.0	16.7	16.3	16.9	17.1
6H	14.6	15.2	14.8	15.4	15.7	15.9	16.5	16.2	16.8	17.0
8H	14.5	15.1	14.8	15.4	15.6	15.9	16.5	16.2	16.7	17.0
12H	14.5	15.0	14.8	15.3	15.6	15.8	16.4	16.1	16.7	16.9
4H 2H	14.6	15.3	14.9	15.5	15.7	16.0	16.7	16.3	16.9	17.1
3H	14.5	15.0	14.8	15.3	15.6	15.8	16.4	16.1	16.7	16.9
4H	14.4	14.9	14.7	15.2	15.5	15.7	16.3	16.1	16.6	16.9
6H	14.3	14.7	14.7	15.1	15.4	15.6	16.1	16.0	16.4	16.8
8H	14.2	14.7	14.6	15.0	15.4	15.6	16.0	16.0	16.4	16.7
12H	14.2	14.6	14.6	14.9	15.3	15.5	15.9	15.9	16.3	16.7
8H 4H	14.2	14.7	14.6	15.0	15.4	15.6	16.0	16.0	16.4	16.7
6H	14.1	14.5	14.6	14.9	15.3	15.5	15.8	15.9	16.2	16.6
8H	14.1	14.4	14.5	14.8	15.2	15.4	15.7	15.9	16.2	16.6
12H	14.0	14.3	14.5	14.7	15.2	15.4	15.6	15.8	16.1	16.6
12H 4H	14.2	14.6	14.6	14.9	15.3	15.5	15.9	15.9	16.3	16.7
6H	14.1	14.4	14.5	14.8	15.2	15.4	15.7	15.9	16.2	16.6
8H	14.0	14.3	14.5	14.7	15.2	15.4	15.6	15.8	16.1	16.6
Variations with the observer position at spacings(CIE Pub.117):										
S = 1.0H	+ 4.0 / -10.4					+ 4.6 / -12.9				
1.5H	+ 6.6 / - 9.8					+ 7.3 / -12.2				
2.0H	+ 5.5 / - 2.7					+ 7.1 / - 4.0				

CIE Pub.117, 919.8 lm Total Lamp Luminous Flux Correct (8log(F/F0) = -0.3)  
Area: 0.001256 m2

C Range: 0 - 360DEG  
C Interval: 30.0DEG  
Test Speed: HIGH  
Temperature:25.3℃  
Operators:Zoe  
Test Date:2022-11-1

γ Range: 0 - 180DEG  
γ Interval: 1.0DEG  
Test System:EVERFINE GO-SPEX500\_V1 SYSTEM V2.00.416  
Humidity:65.0%  
Test Distance:3.160m [K=1.0000]  
Remarks: LAMP:CMA1306-0000-000F0U0A30G Ra:90  
LENS:PM-1084B 36R  
NO DRIVER:500mA  
30minutes warm-up



### UTILIZATION FACTORS TABLE

Test:U:18.727V I:0.4998A P:9.3597W PF:1.0000 Freq:59.98Hz Lamp Flux:919.82x1 lm		
NAME: 2118.565-LEA-09B	TYPE:	WEIGHT:
SPEC.: 3000K	DIM.:	SERIAL No.: 2211011098
MFR.: RISE	SUR.: 0.001256m2	Shielding Angle:

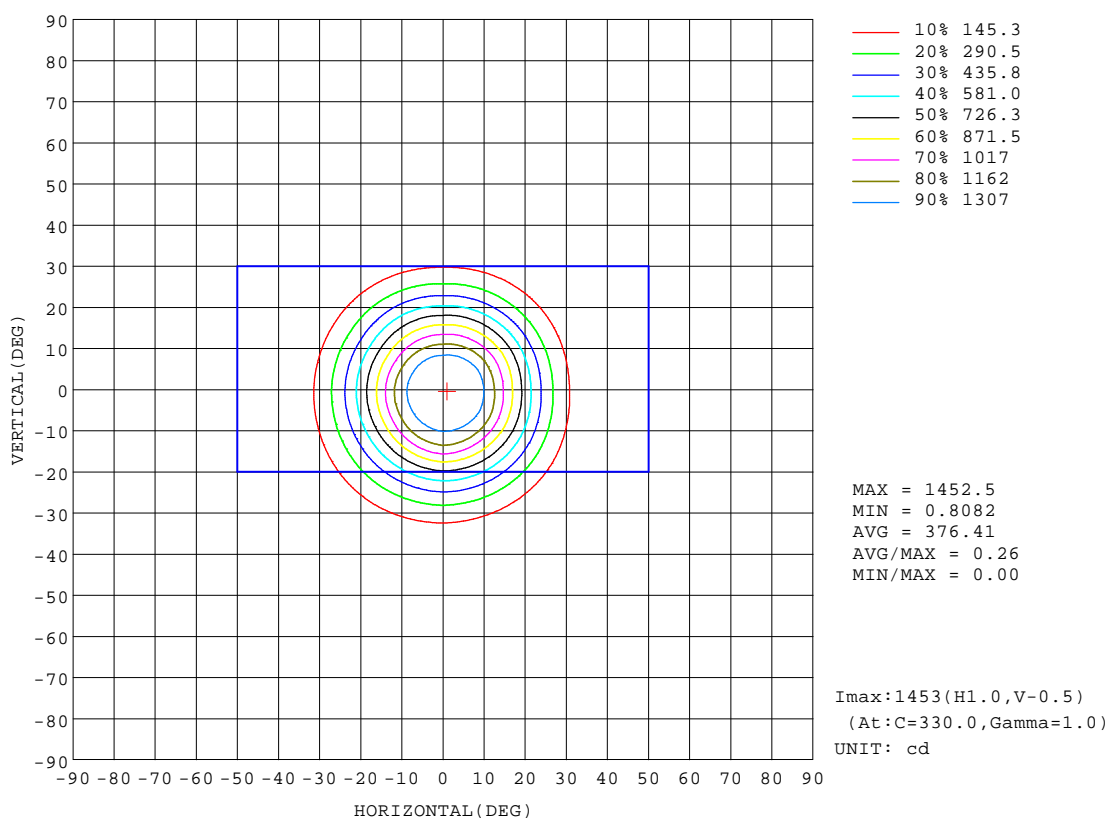
REFLECTANCE										
Ceiling	0.8	0.8	0.8	0.7	0.7	0.7	0.5	0.5	0.5	0
Walls	0.7	0.5	0.3	0.7	0.5	0.3	0.7	0.5	0.3	0
Working plane	0.2	0.2	0.2	0.2	0.2	0.2	0.2	0.2	0.2	0
ROOM INDEX	UTILIZATION FACTORS(PERCENT) $k(RI) \times RCR = 5$									
k = 0.60	62	58	56	62	58	56	61	58	56	53
0.80	67	63	61	66	63	61	66	63	61	58
1.00	69	66	64	69	66	63	68	65	63	61
1.25	72	69	66	71	68	66	70	67	66	63
1.50	73	71	68	73	70	68	71	69	67	65
2.00	75	72	70	74	72	70	72	70	69	65
2.50	76	74	72	75	73	71	73	71	70	66
3.00	77	75	73	76	74	72	73	72	71	67
4.00	78	76	75	77	75	74	74	73	72	68
5.00	79	78	76	77	76	75	75	74	73	68
ROOM INDEX	UF(total)									Direct
According to DIN EN 13032-2 2004			Suspended					SHRNOM = 1.25		

C Range: 0 - 360DEG  
C Interval: 30.0DEG  
Test Speed: HIGH  
Temperature:25.3°C  
Operators:Zoe  
Test Date:2022-11-1

γ Range: 0 - 180DEG  
γ Interval: 1.0DEG  
Test System:EVERFINE GO-SPEX500\_V1 SYSTEM V2.00.416  
Humidity:65.0%  
Test Distance:3.160m [K=1.0000]  
Remarks: LAMP:CMA1306-0000-000F0U0A30G Ra:90  
LENS:PM-1084B 36R  
NO DRIVER:500mA  
30minutes warm-up

## ISOCANDELA DIAGRAM

Test:U:18.727V I:0.4998A P:9.3597W PF:1.0000 Freq:59.98Hz Lamp Flux:919.82x1 lm		
NAME: 2118.565-LEA-09B	TYPE:	WEIGHT:
SPEC.: 3000K	DIM.:	SERIAL No.: 2211011098
MFR.: RISE	SUR.: 0.001256m2	Shielding Angle:

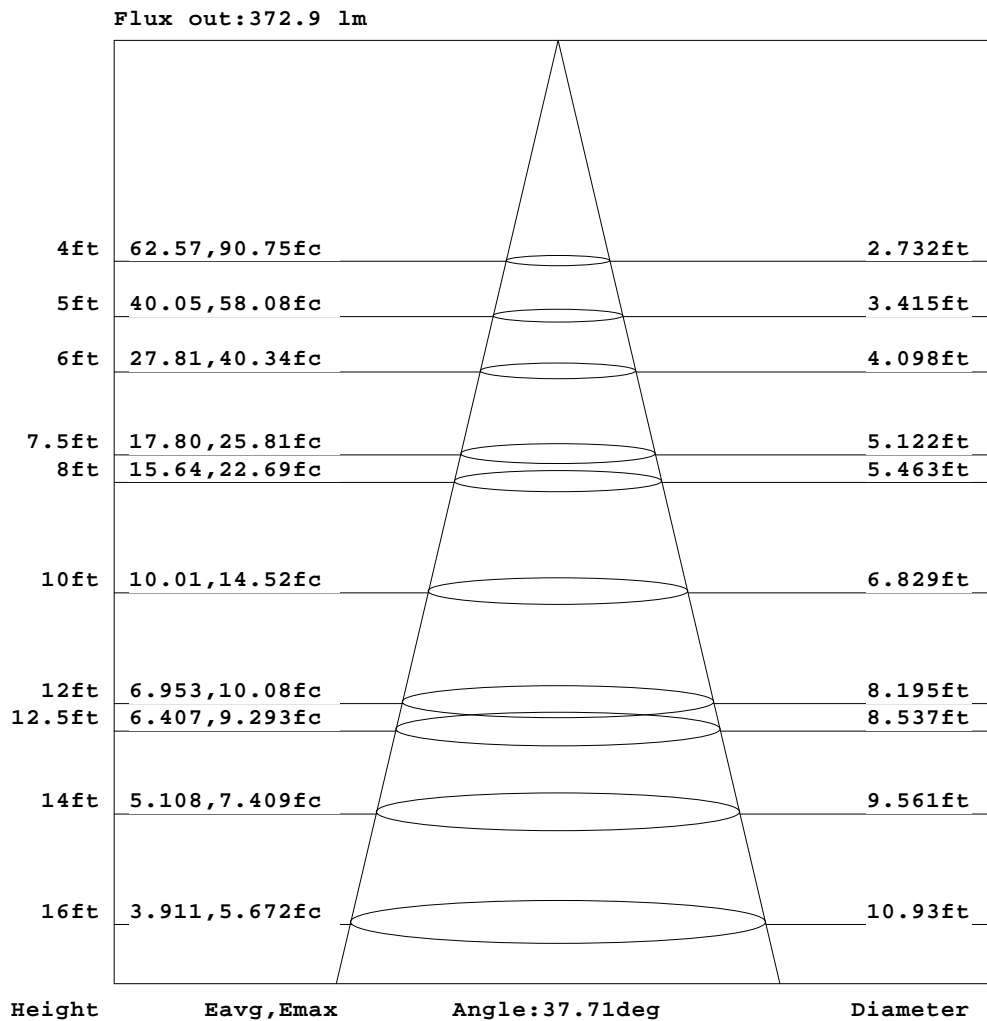


C Range: 0 - 360DEG  
C Interval: 30.0DEG  
Test Speed: HIGH  
Temperature:25.3℃  
Operators:Zoe  
Test Date:2022-11-1

γ Range: 0 - 180DEG  
γ Interval: 1.0DEG  
Test System:EVERFINE GO-SPEX500\_V1 SYSTEM V2.00.416  
Humidity:65.0%  
Test Distance:3.160m [K=1.0000]  
Remarks: LAMP:CMA1306-0000-000F0U0A30G Ra:90  
LENS:PM-1084B 36R  
NO DRIVER:500mA  
30minutes warm-up

## AAI Figure

Test:U:18.727V I:0.4998A P:9.3597W PF:1.0000 Freq:59.98Hz Lamp Flux:919.82x1 lm		
NAME: 2118.565-LEA-09B	TYPE:	WEIGHT:
SPEC.: 3000K	DIM.:	SERIAL No.: 2211011098
MFR.: RISE	SUR.: 0.001256m2	Shielding Angle:



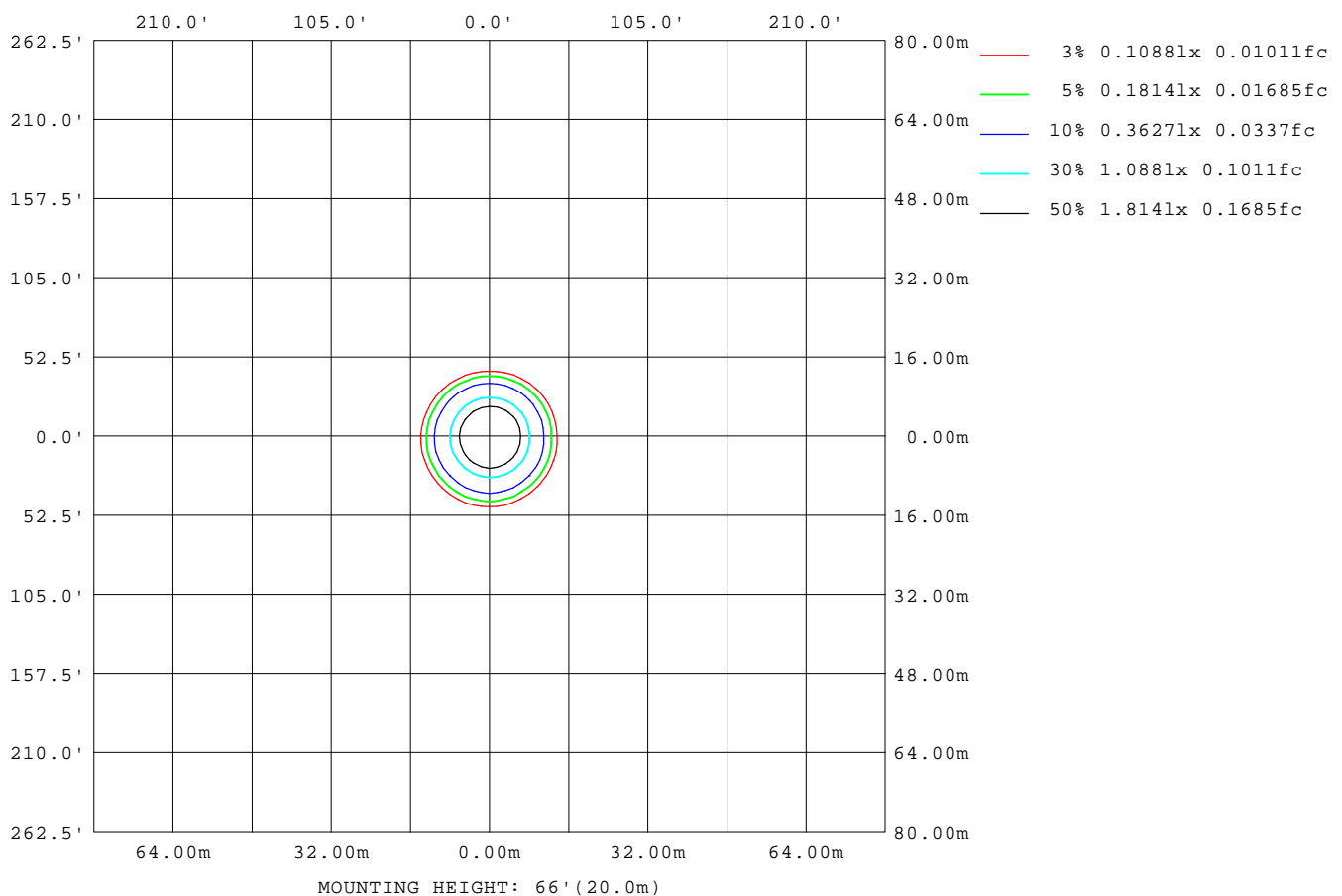
Note: The Curves indicate the illuminated area and the average illumination when the luminaire is at different distance.

C Range: 0 - 360DEG  
C Interval: 30.0DEG  
Test Speed: HIGH  
Temperature: 25.3°C  
Operators: Zoe  
Test Date: 2022-11-1

γ Range: 0 - 180DEG  
γ Interval: 1.0DEG  
Test System: EVERFINE GO-SPEX500\_V1 SYSTEM V2.00.416  
Humidity: 65.0%  
Test Distance: 3.160m [K=1.0000]  
Remarks: LAMP: CMA1306-0000-000F0U0A30G Ra:90  
LENS: PM-1084B 36R  
NO DRIVER: 500mA  
30minutes warm-up

## ISOLUX DIAGRAM

Test:U:18.727V I:0.4998A P:9.3597W PF:1.0000 Freq:59.98Hz Lamp Flux:919.82x1 lm		
NAME: 2118.565-LEA-09B	TYPE:	WEIGHT:
SPEC.: 3000K	DIM.:	SERIAL No.: 2211011098
MFR.: RISE	SUR.: 0.001256m2	Shielding Angle:



C Range: 0 - 360DEG  
C Interval: 30.0DEG  
Test Speed: HIGH  
Temperature: 25.3 °C  
Operators: Zoe  
Test Date: 2022-11-1

γ Range: 0 - 180DEG  
γ Interval: 1.0DEG  
Test System: EVERFINE GO-SPEX500\_V1 SYSTEM V2.00.416  
Humidity: 65.0%  
Test Distance: 3.160m [K=1.0000]  
Remarks: LAMP: CMA1306-0000-000F0U0A30G Ra:90  
LENS: PM-1084B 36R  
NO DRIVER: 500mA  
30minutes warm-up

## LED Avg.L Report

Test:U:18.727V I:0.4998A P:9.3597W PF:1.0000 Freq:59.98Hz Lamp Flux:919.82x1 lm		
NAME: 2118.565-LEA-09B	TYPE:	WEIGHT:
SPEC.: 3000K	DIM.:	SERIAL No.: 2211011098
MFR.: RISE	SUR.: 0.001256m2	Shielding Angle:

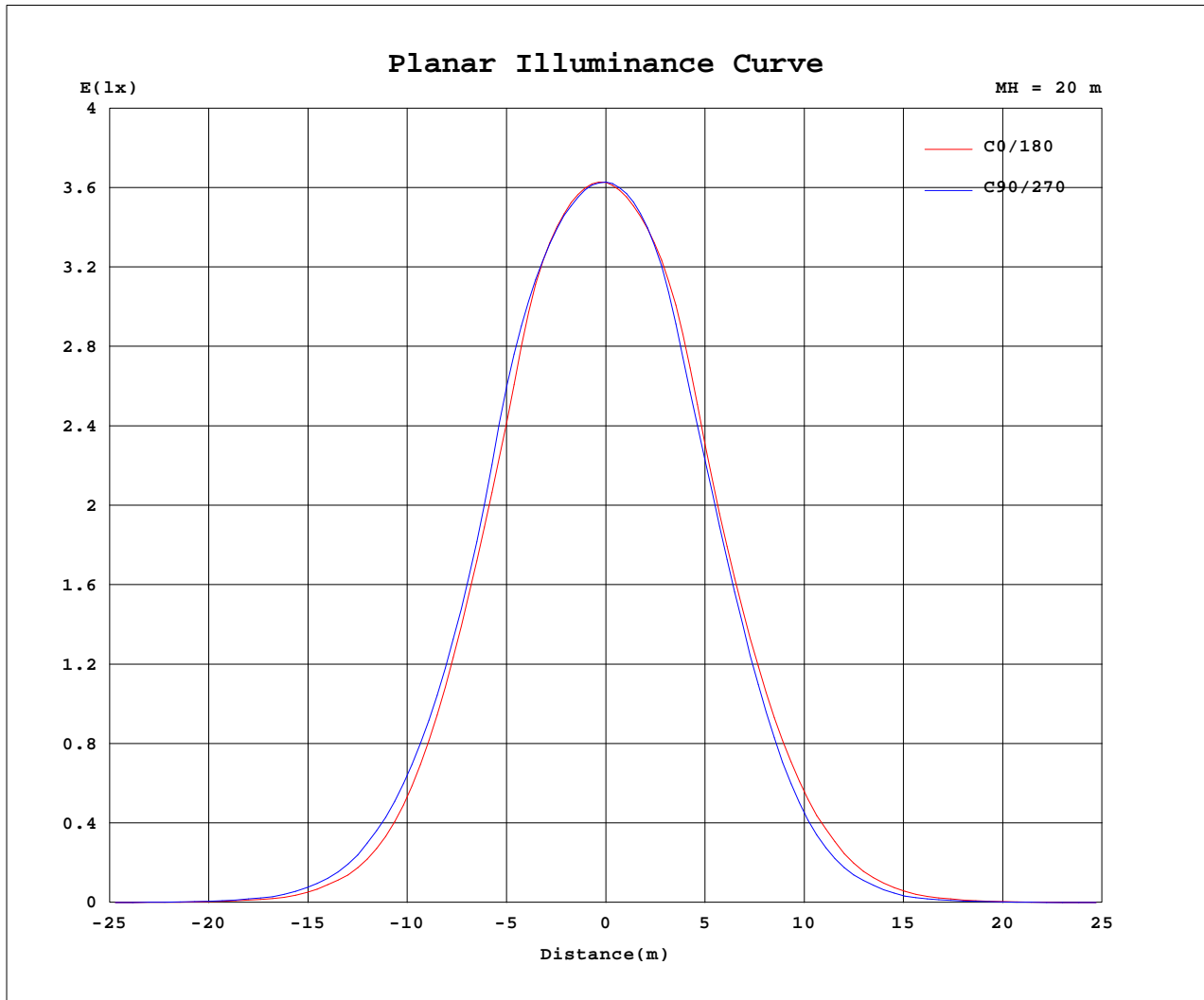
AvgL	cd/m2
L_0~180(65)av	1084
L_0~180(75)av	731
L_0~180(85)av	736
L_90~270(65)av	1076
L_90~270(75)av	714
L_90~270(85)av	698
L_45(65)av	1052
L_45(75)av	707
L_45(85)av	646

Standard: GB/T 29293-2012

C Range: 0 - 360DEG  
C Interval: 30.0DEG  
Test Speed: HIGH  
Temperature:25.3℃  
Operators:Zoe  
Test Date:2022-11-1

γ Range: 0 - 180DEG  
γ Interval: 1.0DEG  
Test System:EVERFINE GO-SPEX500\_V1 SYSTEM V2.00.416  
Humidity:65.0%  
Test Distance:3.160m [K=1.0000]  
Remarks: LAMP:CMA1306-0000-000F0U0A30G Ra:90  
LENS:PM-1084B 36R  
NO DRIVER:500mA  
30minutes warm-up

## Planar Illuminance Curve



C Range: 0 - 360DEG  
 C Interval: 30.0DEG  
 Test Speed: HIGH  
 Temperature: 25.3 °C  
 Operators: Zoe  
 Test Date: 2022-11-1

γ Range: 0 - 180DEG  
 γ Interval: 1.0DEG  
 Test System: EVERFINE GO-SPEX500\_V1 SYSTEM V2.00.416  
 Humidity: 65.0%  
 Test Distance: 3.160m [K=1.0000]  
 Remarks: LAMP: CMA1306-0000-000F0U0A30G Ra:90  
 LENS: PM-1084B 36R  
 NO DRIVER: 500mA  
 30minutes warm-up

## LUMINOUS DISTRIBUTION INTENSITY DATA

Test:U:18.727V I:0.4998A P:9.3597W PF:1.0000 Freq:59.98Hz Lamp Flux:919.82x1 lm		
NAME: 2118.565-LEA-09B	TYPE:	WEIGHT:
SPEC.: 3000K	DIM.:	SERIAL No.: 2211011098
MFR.: RISE	SUR.: 0.001256m2	Shielding Angle:

Table--1

UNIT: cd

C(DEG) γ (DEG)	0	30	60	90	120	150	180	210	240	270	300	330						
0	1451	1451	1451	1451	1451	1451	1451	1451	1451	1451	1451	1451						
5	1426	1430	1426	1419	1411	1403	1399	1396	1400	1404	1415	1427						
10	1305	1320	1314	1313	1294	1273	1261	1237	1225	1220	1256	1296						
15	995	1032	1049	1071	1020	966	947	918	917	917	951	990						
20	672	705	712	713	679	651	642	612	612	600	631	665						
25	375	411	424	431	410	392	382	350	339	322	343	365						
30	167	198	207	223	211	200	189	161	147	136	150	162						
35	65.5	75.1	83.9	89.7	88.5	79.3	71.6	60.7	50.8	46.8	52.8	62.3						
40	18.2	24.1	23.6	26.7	26.1	24.4	21.6	16.8	14.3	13.4	15.1	16.6						
45	5.94	7.21	7.70	8.32	8.40	6.90	5.89	4.52	4.06	3.86	4.43	5.19						
50	1.83	1.95	1.94	2.03	1.88	1.65	1.50	1.31	1.18	1.16	1.26	1.51						
55	1.10	1.08	0.99	0.98	0.92	0.89	0.94	0.86	0.80	0.82	0.87	0.96						
60	0.80	0.73	0.65	0.63	0.60	0.60	0.69	0.66	0.65	0.67	0.68	0.71						
65	0.62	0.56	0.53	0.51	0.50	0.49	0.53	0.55	0.59	0.63	0.63	0.62						
70	0.41	0.40	0.38	0.37	0.33	0.31	0.32	0.32	0.37	0.47	0.50	0.43						
75	0.25	0.24	0.24	0.23	0.22	0.21	0.22	0.22	0.22	0.24	0.24	0.25						
80	0.16	0.15	0.15	0.15	0.13	0.13	0.14	0.13	0.14	0.15	0.15	0.16						
85	0.09	0.08	0.08	0.08	0.07	0.06	0.07	0.06	0.06	0.07	0.08	0.08						
90	0.00	0.00	0.00	0.00	0.00	0.00	0.00	0.00	0.00	0.00	0.00	0.00						
95	0.00	0.00	0.00	0.00	0.00	0.00	0.00	0.00	0.00	0.00	0.00	0.00						
100	0.00	0.00	0.00	0.00	0.00	0.00	0.00	0.00	0.00	0.00	0.00	0.00						
105	0.00	0.00	0.00	0.00	0.00	0.00	0.00	0.00	0.00	0.00	0.00	0.00						
110	0.00	0.00	0.00	0.00	0.00	0.00	0.00	0.00	0.00	0.00	0.00	0.00						
115	0.00	0.00	0.00	0.00	0.00	0.00	0.00	0.00	0.00	0.00	0.00	0.00						
120	0.00	0.00	0.00	0.00	0.00	0.00	0.00	0.00	0.00	0.00	0.00	0.00						
125	0.00	0.00	0.00	0.00	0.00	0.00	0.00	0.00	0.00	0.00	0.00	0.00						
130	0.00	0.00	0.00	0.00	0.00	0.00	0.00	0.00	0.00	0.00	0.00	0.00						
135	0.00	0.00	0.00	0.00	0.00	0.00	0.00	0.00	0.00	0.00	0.00	0.00						
140	0.00	0.00	0.00	0.00	0.00	0.00	0.00	0.00	0.00	0.00	0.00	0.00						
145	0.00	0.00	0.00	0.00	0.00	0.00	0.00	0.00	0.00	0.00	0.00	0.00						
150	0.00	0.00	0.00	0.00	0.00	0.00	0.00	0.00	0.00	0.00	0.00	0.00						
155	0.00	0.00	0.00	0.00	0.00	0.00	0.00	0.00	0.00	0.00	0.00	0.00						
160	0.00	0.00	0.00	0.00	0.00	0.00	0.00	0.00	0.00	0.00	0.00	0.00						
165	0.00	0.00	0.00	0.00	0.00	0.00	0.00	0.00	0.00	0.00	0.00	0.00						
170	0.00	0.00	0.00	0.00	0.00	0.00	0.00	0.00	0.00	0.00	0.00	0.00						
175	0.00	0.00	0.00	0.00	0.00	0.00	0.00	0.00	0.00	0.00	0.00	0.00						
180	0.00	0.00	0.00	0.00	0.00	0.00	0.00	0.00	0.00	0.00	0.00	0.00						

C Range: 0 - 360DEG  
C Interval: 30.0DEG  
Test Speed: HIGH  
Temperature:25.3℃  
Operators:Zoe  
Test Date:2022-11-1

γ Range: 0 - 180DEG  
γ Interval: 1.0DEG  
Test System:EVERFINE GO-SPEX500\_V1 SYSTEM V2.00.416  
Humidity:65.0%  
Test Distance:3.160m [K=1.0000]  
Remarks: LAMP:CMA1306-0000-000F0U0A30G Ra:90  
LENS:PM-1084B 36R  
NO DRIVER:500mA  
30minutes warm-up